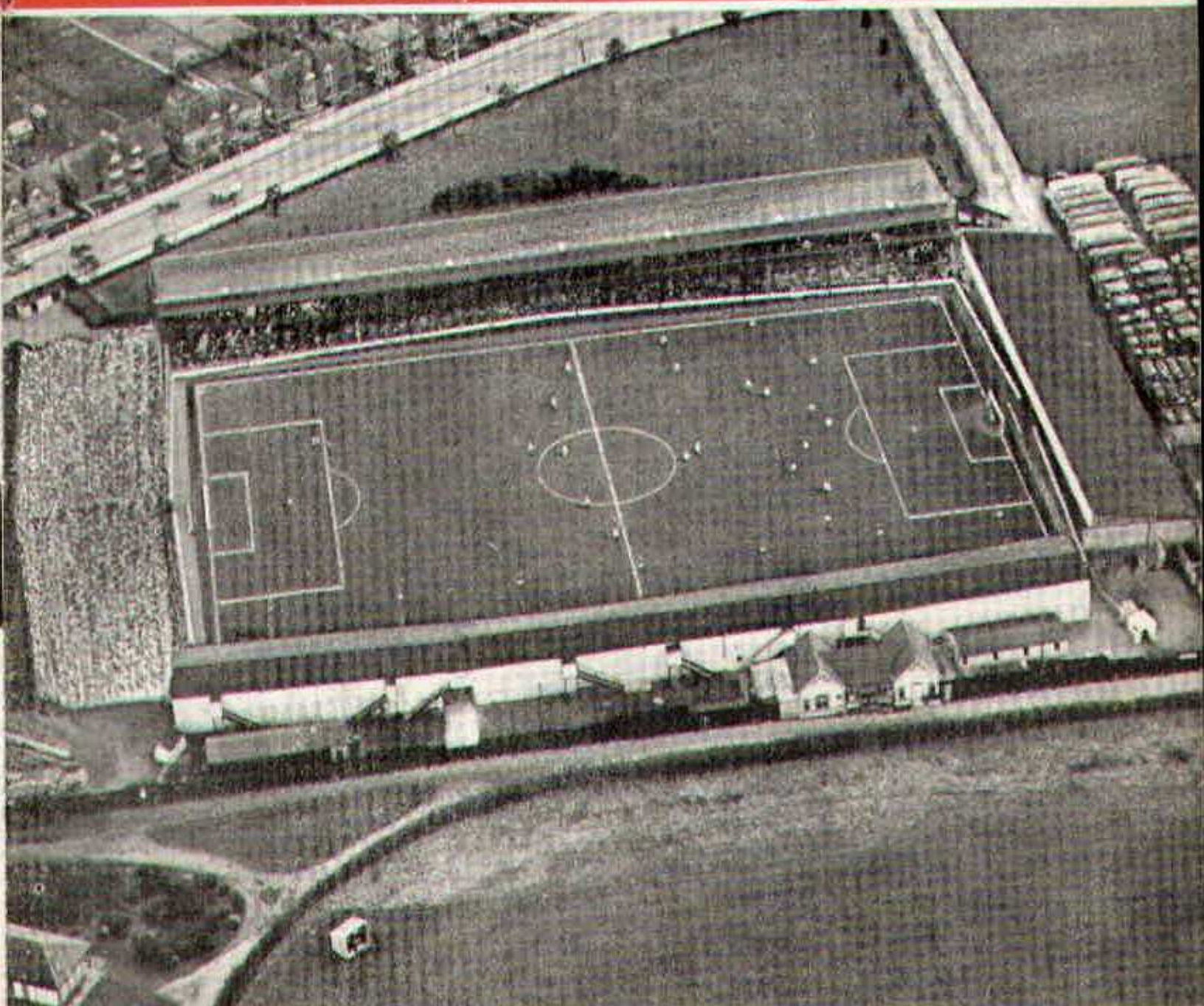


SWINDON TOWN



FOOTBALL CLUB

OFFICIAL PROGRAMME 6d.



**FURNITURE AND FURNISHINGS
OF CHARM AND DISTINCTION**



CARPETS - FLOORCOVERINGS
LOOSE COVERS - CURTAINS
SKILLED WORKSHOP REPAIR SERVICE
AND REMOVALS



Contractors to Government Departments, Hospitals
and Borough Councils

MILLS & MERRICKS LTD.

16-17 BRIDGE STREET, SWINDON

TELEPHONE 5365/6

SATURDAY, 2nd MARCH, 1963

Division III

SWINDON TOWN

v.

BRISTOL CITY

Kick-off 3 p.m.

REFEREE:

Mr. J. S. PICKLES (Stockport)

LINESMEN:

Red Flag -

Mr. C. COPPACK

Yellow Flag -

Mr. H. V. GISBORNE (Sherborne)

for fine printing
you should have
a fine printer

BOROUGH PRESS (SWINDON) LTD

Maylott Studios

For **GROUP & SPORT** Photographs

Official Photographer to
Swindon Town Football Club

31 FARINGDON ROAD
TEL. 22792

NOTTON'S CAFE

COUNTY ROAD

200 yards from Ground

RIGHT ON THE BALL

C. DUNN & SON

BUILDERS & DECORATORS

Alterations, Renovations, Conversions
Plumbers & Sanitary Engineers

503 CRICKLADE ROAD
TEL. 22522

LEESE, ING & Co. Ltd.

Mineral Water and
Squash Manufacturers

Lansdown Rd., Swindon
Telephone 22744

"COALI"
"COALI"
"COALI"

J. WILMER

ST. MARGARET'S ROAD
SWINDON
Telephone 22535

L. Wollen

OFF LICENCE

WINES and SPIRITS

Arkell's Ales and Stout
373 Cricklade Rd., Swindon
Deliveries Daily Phone 3508

SWINDON TOWN FOOTBALL COMPANY LIMITED

Registered Office: COUNTY GROUND, SWINDON.

Directors:

Mr. W. J. CASTLE (Chairman)

Mr. H. E. LANE (Vice-Chairman)

Mr. B. T. HAMILTON (Hon. Treasurer)

Messrs. C. CHANDLER, J.P., J. DAVIES,

R. FRICKER, C. J. GREEN, F. PLYER, H. WILLIAMS and K. H. WILMER

Manager: B. J. HEAD

Secretary: R. A. MORSE

VOL. 13

SATURDAY, MARCH 2nd, 1963

No. 19

CLUB NOTES

It seems possible that a Division 3 home fixture will be played. Our last home league game was exactly a month ago, when we defeated Crystal Palace by one goal to nil. Even so, many clubs are much worse off, not having played since early in December 1962.

Our lads have been fortunate in regard to match practice as we were able to play the senior team in a Combination game against Birmingham, and also a friendly in Ireland.

This no doubt had a bearing on the result at Watford last Saturday. Our lads played really well, to return home with a point from promotion rivals. These notes are being written before the result is known of the Wrexham game. That indeed is a difficult assignment, as our opponents have won their last two away games at Peterborough and Millwall. Real championship form.

The Annual Dinner and Dance of the Supporters' Club was held in McIlroys Restaurant on Monday, 18th February, 1963. It was a great success, the most outstanding for several years. The reasons are many: the first time the function has been held

WILSONS (SWINDON) LTD.

BUILDERS OF MODERN ATTRACTIVE
HOUSES AND BUNGALOWS

Enquiries to:

Head Office: 90 COMMERCIAL ROAD, SWINDON 6361

Site Office: COVENTRY FARM ESTATE, WROUGHTON 271

Site Office: QUEENSFIELD ESTATE, STRATTON S.M. 3405

The Rendezvous of all Sportsmen -

THE CROWN INN

(Host: Frank Plyer)

Arkell's Best Ales : Fully Licensed

Snacks, etc.

Stratton St. Margaret Tel. 2339

Always at your service

L. BIBBY

For all Types, Rags, Iron and Metal,
etc. Spot Cash Paid. Please Tel.
2101 and our van will call.

THE PADDOCK, ERMIN STREET
STRATTON ST. MARGARET

FISH

POTATOES

T. QUALITY (Swindon)
LTD.

Wholesale Merchants

COLLEGE STREET

TEL. 5446/7

For Best Quality Wet Fish
9 a.m. - 6 p.m. (except Mondays)

YORK ROAD FISHERIES

Frying Mid-day Tuesday, Thursday,
Friday and Saturday

Phone 3680

MARSHGATE GARAGE

MOTOR ENGINEERS :: ROOTES GROUP DEALERS

STRATTON ROAD - SWINDON - WILTS.

Tel. Swindon 22788

TWO MINUTES FROM GROUND

CLUB NOTES - continued

on a Monday instead of Saturday; the enthusiasm and energy of the organisers; the response of the management and players (every member of the professional staff was present accompanied by wife or girl friend); the entry into the spirit of the affair by the players, and their contributions to the evening's entertainment; lastly, the response of the general public. Without any meaning of disparagement, we venture to suggest with some trepidation — such is the result of success on the field. It is great to see such interest, and the huge gathering of people. We only wish we could arouse such enthusiasm when things are going badly. That is when it is needed most — that is when we know our real supporters.

Many people present would, no doubt, have liked to hear Mr. Castle speak. Swindon Town Football Club is a democratic body. The chairman is the elected representative of the shareholders and directors, and as such is the official spokesman of the club. Football is changing rapidly, both in league formation and conception of facilities. Obviously, many plans for the future well-being of the club are being formulated and discussed.

Our fixture today revives many memories, none more vivid than last season's game. Swindon had enjoyed quite a run of success — eleven games without a defeat — then on 10th March Bristol presented themselves at the County Ground, and won decisively by four goals to nil. We have indeed an old score to pay off. A glance at the league tables prior to the game makes interesting reading. We also add the results and position of Reading.

PANKHURST

The Palace - Gorse Hill - Swindon

MOTOR CYCLE - SCOOTER AND
THREE-WHEELER SPECIALISTS

Open Mon. to Sat. 9 a.m. - 8 p.m.

Phone 5466

Their kit is supplied by

SWINDON SPORTS CENTRE

WHO HAVE THE BEST SELECTION

Tel. 4270

114 COMMERCIAL ROAD

IVOR MESSENGER & SONS

High-Class Family Butchers

QUALITY WITH ECONOMY :: FAIREST PRICES IN TOWN

1 COLLEGE STREET, SWINDON

Tel. 5647

£10 TYPEWRITERS from **£10**

FULLY GUARANTEED

Also full selection new standard and portable typewriters
OFFICE EQUIPMENT

DOBELL SHEARMAN
& Co. Ltd.

26 High Street & 33 Faringdon Road, Swindon.

Tel. 4961/2

CLUB NOTES—continued

10th March, 1962.

Bristol City (3rd in the League-table).

P	W	D	L	F	A	Pts.
35	19	5	11	74	48	43

Reading (6th in the League-table).

P	W	D	L	F	A	Pts.
33	17	5	11	59	52	39

Swindon (13th in the League-table).

P	W	D	L	F	A	Pts.
32	9	13	10	55	55	31

Positions as printed 28th February, 1963.

Swindon Town (1st Position in the League).

P	W	D	L	F	A	Pts.
28	12	10	6	55	34	34

Bristol City (14th Position in the League).

P	W	D	L	F	A	Pts.
27	9	8	10	58	55	26

Reading (22nd Position in the League).

P	W	D	L	F	A	Pts.
26	9	2	15	45	47	20

When our Assistant Secretary, Mr. A. S. Davies, puts away his pens and pencils it will be for the very last time. Today he retires, after giving loyal and devoted service to Swindon Town Football Club over a period of fifty years. He has never spared himself to do his best for player or spectator. This club has indeed been his life. We wish him well. A fit "young" man of sixty-eight, he is still able to enjoy himself, either at his favourite seaside resort Selsey Bill, or sail his yacht on a sunny afternoon along the River Thames. Good luck Bert, and many, many thanks!

OUR VISITORS

We welcome the Officials and Players of Bristol City Football Club to the County Ground for this afternoon's Division III game.

The teams have already met once this season at Bristol in a Division III game, when the result was a 2-2 draw. The Swindon scorers on that occasion were Hunt and Jackson.

Below are pen pictures of the Bristol City players from whom today's team will be selected.

Nicholls, Ronald B. (goalkeeper).

Born Sharpness, was transferred from Cardiff City July 1961, with whom he had spent three seasons. Previously four seasons with Bristol Rovers. Glos. County C.C. opening batsman.

Briggs, Alec M. (right-back).

Born Sheffield, signed pro. forms April 1957 after one season with Colts XI. Made four Second Division appearances in first season. Is now engaged on part-time basis. Ever-present last season.

Smith, David B. (full-back).

A native of Dundee, had eleven seasons with Burnley, one season with Brighton & Hove Albion. Transfer secured June 1962.

Thresher, Michael (left-back).

A native of Bradninch, Devon, is one of five footballing brothers, and was signed from Chard Town in 1954. Converted from inside-left to full-back, appearing in 22 matches in promotion team 1954/55. Made 213 Second Division appearances in five seasons and 93 League and Cup appearances in last two seasons.

For Quality FLOWERS - FRUIT - VEGETABLES
also FROZEN FOODS

CLARKE'S of Old Swindon

Proprietors: A. G. G. and J. A. W. HUNT

64 DEVIZES ROAD - SWINDON

Phone 22337

ORDERS DELIVERED

SEA VIEW CAMP

Camp Road, Wyke Regis, Weymouth. Tel 3351

Site overlooks Chesil Beach - Ideal for Camping Parties
Also Modern Caravans for Hire

Swindon Bacon Curing Co. Ltd.

Specialists in

BACON - PORK - COOKED HAM

50 FLEET STREET, SWINDON

Telephone 22122

Meet your friends for an enjoyable evening at

THE KINGSDOWN INN

(Host A. W. Vann)

FULLY LICENSED - ARKELL'S BEERS

SNACKS - Etc.

STRATTON ST. MARGARET

Tel. 3283

OUR VISITORS—continued

Etheridge, Robert J. (right-half).

Originally an inside-left, was secured from Gloucester City in September 1956. Has made 213 first team appearances and scored 35 goals. Converted to half-back during season 1959/60.

Connor, John F. (centre-half).

Born Maryport, Cumberland; transferred from Huddersfield Town October 1960, with whom he had played for eight seasons. Ever-present 1961/62, playing in a total of 56 matches.

Casey, Thomas (left-half).

Comes from Culmer, Co. Down, previously with Newcastle United (four seasons), Portsmouth and Bournemouth & Boscombe. Joined Bristol City March 1959, and has appeared in 114 first team League and Cup games. Capped six times for Ireland and played in World Cup series in 1958.

Peters, Roger D. (outside-right).

Born Cheltenham; signed pro. forms on 17th birthday and made League debut six weeks later v. Brentford in April 1961. Also toured Israel with England Youths May 1962.

Atyeo, John (inside-right or centre-forward).

Born Dilton, Westbury; first signed for Bristol City in June 1951. Capped against Brazil, Sweden, Spain, Denmark and Eire. Leading goal-scorer over a number of seasons; has made 248 Third Division (119 goals) and 200 Second Division (115 goals) appearances. In all has appeared in 514 League, F.A. Cup and Club representative games and scored 278 goals.

Tait, Alex (centre-forward).

Born Bedlington, Northumberland. After six seasons with Newcastle United, has just completed second season with

OUR VISITORS - continued

Bristol City, having played in 84 first team matches and scored 34 goals. A schoolmaster who has specialised in physical education after a course at Loughborough College.

Clark, Brian D. (inside-forward).

Bristol-born, son of previous City centre-forward, Don Clark. Was captain of successful Bristol Boys' team 1957/58, and with Adrian Williams and Jantzen Derrick, joined ground staff on leaving school. Has progressed through City Junior sides, making League debut in April 1961.

Williams, Robert G. (inside-left).

Ex-Bristol schoolboy player, is Bristol-born and a product of City Junior sides. Signed pro. May 1958 and made first team debut 1959/60 season. Has made 90 League appearances and scored 32 goals.

Williams, Adrian (inside-left).

Bristol-born, another member of Bristol Boys' team and a Schoolboy International. F.A. Youth trialist January 1960, Reserve England Youth v. Scotland February 1960, and capped v. Wales March 1960. Member Youth International party in Tournament in Graz, Austria, April 1960. Signed pro. forms on 17th birthday. Has made only four Third Division appearances to date.

Derrick, Jantzen S. (outside-left).

Bristol boy, played with Clark and Adrian Williams in Schools' Trophy-winning Bristol Boys' team in 1957/58. Played in Second Division football six weeks prior to 17th birthday. Took part in F.A. Youth trial. Has made 77 League and Cup appearances to end of last season.

B. J. MARTIN & SONS LTD.

Butcher

10 HIGH STREET
MARLBOROUGH
Phone 212

126 VICTORIA ROAD
SWINDON
Phone 4860

CLARK BROS. (SWINDON) LTD.

**BUILDING AND CIVIL ENGINEERING
CONTRACTORS
SWINDON**

Telephone: Swindon 3417/8/9

Do not let **CHILBLAINS** spoil a good game

RELAPERN

Price 2/6 from your CHEMIST

2/10 Post Paid from

Ballard & Co. (Chemists) Ltd., Faringdon, Berks.

DIVISION III

	P.	W.	D.	L.	F.	A.	Pts.
SWINDON TOWN	28	12	10	6	55	34	34
Peterborough United	28	14	6	8	66	47	34
Coventry City	27	11	11	5	53	42	33
Bournemouth	26	11	10	5	37	26	32
Notts County	27	13	6	8	40	42	32
Northampton Town	26	12	7	7	57	40	31
Watford	27	14	3	10	62	47	31
Wrexham	26	13	3	10	53	52	29
Southend United	26	13	3	10	46	46	29
Queen's Park Rangers	26	11	6	9	53	41	28
Shrewsbury Town	27	10	8	9	62	54	28
Port Vale	25	10	7	8	35	30	27
Hull City	25	11	5	9	46	40	27
Bristol City	27	9	8	10	58	55	26
Bristol Rovers	26	10	5	11	44	52	25
Barnsley	26	9	5	12	36	40	23
Millwall	26	6	11	9	49	55	23
Colchester United	26	7	9	10	43	56	23
Brighton & H. A.	31	7	9	15	43	62	23
Bradford	26	7	8	11	39	54	22
Halifax Town	27	6	9	12	36	57	21
Reading	26	9	2	15	47	49	20
Crystal Palace	26	5	9	12	28	42	19
Carlisle United	25	4	8	13	20	53	16

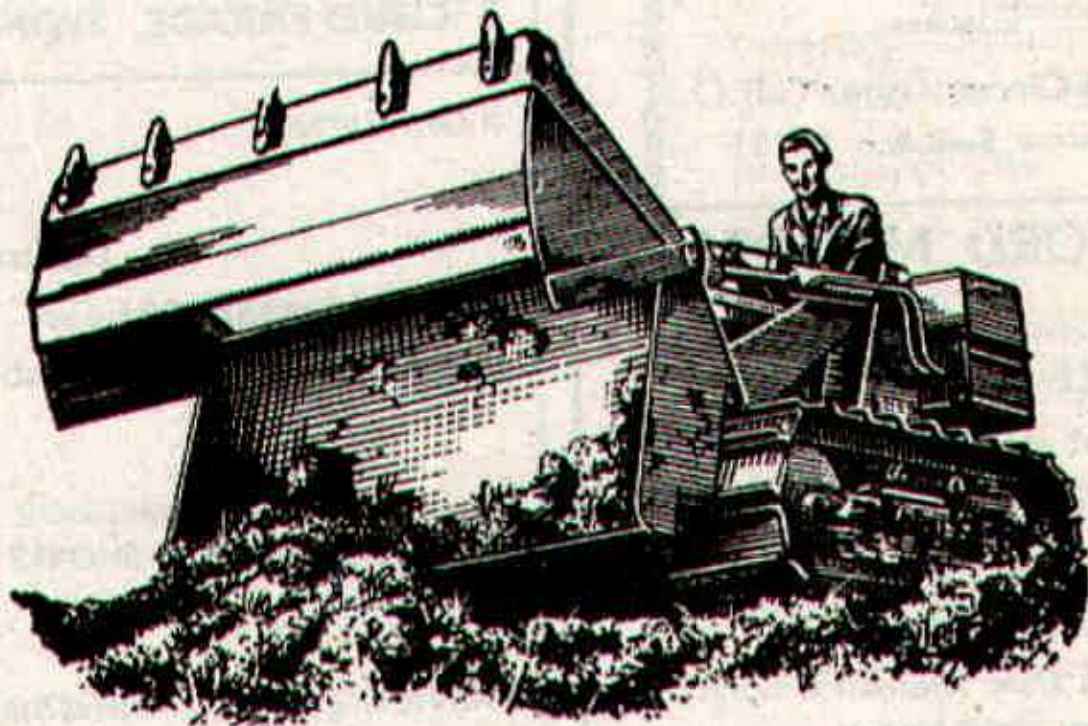
DIVISION III FIXTURE LIST

Date	Opponents	Ground	Result
August 18	BARNSELY	(A)	1-1
21	COVENTRY CITY	(H)	4-1
25	NORTHAMPTON TOWN	(H)	2-3
28	COVENTRY CITY	(A)	0-2
September 1	QUEEN'S PARK RANGERS	(A)	2-2
4	BRIGHTON and HOVE ALBION	(A)	1-1
8	HULL CITY	(H)	2-0
11	BRIGHTON and HOVE ALBION	(H)	5-1
15	CRYSTAL PALACE	(A)	0-0
18	CARLISLE UNITED	(A)	0-0
22	WREXHAM	(H)	3-0
25	DARLINGTON (Cup).....	(H)	4-0
29	HALIFAX TOWN	(A)	3-4
October 2	BRISTOL ROVERS	(H)	3-0
6	WATFORD	(H)	3-1
9	BRISTOL ROVERS	(A)	0-2
13	BRISTOL CITY	(A)	2-2
20	READING	(H)	1-1
27	PORT VALE	(A)	1-2
November 3	(1) READING	(H)	4-2
10	MILLWALL	(A)	4-3
17	SOUTHEND UNITED	(H)	4-1
24	(2) YEOVIL.....	(A)	2-0
December 1	NOTTS COUNTY	(H)	3-1
8	BOURNEMOUTH and B.A.	(A)	0-0
15	BARNSELY	(H)	2-1
26	BRADFORD	(A)	0-2
1963			
January 12	QUEEN'S PARK RANGERS	(H)	5-0
19	HULL CITY	(A)	0-0A
26	(3) LUTON TOWN	(A)	2-0
29	(4) EVERTON	(H)	1-5
February 2	CRYSTAL PALACE	(H)	1-0
23	WATFORD	(A)	3-3
27	WREXHAM	(A)	0-0
March 2	BRISTOL CITY	(H)
8	(6) READING	(A)
16	PORT VALE	(H)
23	SHREWSBURY TOWN	(A)
26	NORTHAMPTON TOWN	(A)
30	(S.F.) MILLWALL	(H)
April 2	BRADFORD	(H)
6	SOUTHEND UNITED	(H)
12	PETERBOROUGH UNITED	(H)
13	COLCHESTER UNITED	(H)
15	PETERBOROUGH UNITED	(A)
20	NOTTS COUNTY	(A)
27	BOURNEMOUTH and B.A.	(H)
30	CARLISLE UNITED	(H)
May 4	HALIFAX TOWN	(H)
6	COLCHESTER UNITED.....	(A)
14	SHREWSBURY TOWN	(H)
18	HULL CITY	(A)

H. HIBBERD LIMITED

40 NEWPORT STREET - SWINDON

PLANT HIRE



TRACTORS and SCRAPERS

BULLDOZERS

DROTT SHOVELS

J.C.B. and DINKUM DIGGERS

ROAD ROLLERS

TELEPHONE: SWINDON 6125

Hatton's Newsagency

A. J. D. Woodhouse and A. Smith

**Newsagents :: Tobacconists
Confectioners**

Agents for Wessex School of
Motoring

Main Booking Agents for Millers
Coaches

6 Regent Circus (near G.P.O.)
Telephone Swindon 22731

HULFORD MOTORS Ltd.

SELF DRIVE HIRE

Fleet of 1963 Fords
Anglias De-Luxe - Cortinas
De-Luxe - Zephyr 4s.

SHRIVENHAM ROAD

(200 yards from Football Ground)

Phone 4934

Large Car Park available

For High Class
Central Heating, Plumbing
Painting and Decorating
Electrical Installations
and Repairs

**NORTH WILTS
Sanitary & Heating
Co. Ltd**

NEWPORT ST., SWINDON

Phone 5373/4

WARNES (Swindon)

Electrical Contractors - Radio

Contractors to SWINDON TOWN

160 COUNTY ROAD, SWINDON
9 SWINDON STREET, HIGHWORTH
7 CLIVE PARADE, SWINDON

RIGHT WING

SWINDON
O'Hara

Dawson (2)

Morgan (4)

McPherson (5)

Summerbee (7)

Hunt (8)

Smith (9)

Swindon Colours:
RED SHIRTS, WHITE SHORTS

**FOOTBALL
PINK**

Derrick (11)

Williams, B. (10)

Atyeo

Etheridge (6)

Connor (5)

Thresher (3)

Nicholls

LEFT WING

BRISTOL CITY

WARNES T.V.

TO BE SUR

51 Commercial Road - Swindon

and Branches

(Swindon) LTD.

tors - Radio and Television

SWINDON TOWN FOOTBALL CLUB

ON
ORTH
PHONE 6346/7
PHONE 379
PHONE 6346/7

SWINDON LEFT WING
O'Hara

) Trollope (3)
cPherson (5) Woodruff (6)
Smith (9) Jackson (10) Darcy (11)



These teams are subject to alteration

(10) Atyeo (9) Clark (8) Tait (7)
Connor (5) Parr (4)

3) Briggs (2)
Nicholls
BRISTOL CITY RIGHT WING

T.V. RENTALS

BE SURE

ad - Swindon - Phone 6486

nd Branches

McILROYS

RESTAURANT

for morning coffee, luncheon and afternoon tea - in pleasant surroundings - you will find McIlroys are top of the 'league'.

Full table service, best Beers and Wines. Parties and Functions catered for.

McIlroys Restaurant

64-72 Regent Street
Tel. 5294



THE ALCOHOL FUEL

COATE GARAGE

REPAIRS - OVERHAULS - WELDING
SERVICING - REBORING - TYRES

Props. E. V. & W. H. Mattick
Marlborough Rd., Swindon

SUPPORTERS' CLUB NOTES

Supporters generally will have heard with very mixed feelings of the pending retirement of Mr. Bert Davies, the Town F.C.'s Assistant Secretary, after an association with the Club extending over a period of some 53 years.

Our local Press, with more space available, paid a more adequate tribute to his career than it is possible for us to do, but we must not let the occasion pass without some reference.

His playing days formed a connecting link between two eras, for he was associated with such players as Fleming, Skiller, Tout, Jefferson and Silto at the end of their careers, and also with players of later seasons, such as Rogers, Hinton, Nash, Hawley, Philipson and many others.

Many supporters will remember his very successful partnerships with his inside lefts: first Batty, and then Jack Johnson, when Bert Davies' glorious corner kicks and centres from the left wing produced so many goals by his inside partners.

He enjoyed his football and some will remember his "back-chat" with his old friend Fred Fox (another product of Swindon football) when the latter was keeping goal for the opposing team, in matches with Gillingham and Millwall.

Although mainly playing on the left wing, there were occasions, through injuries to the left full back, when Bert played there very creditably, a feature of his play being his strong and extremely accurate clearances.

Now he has decided that he will enjoy his football in a more leisurely way, and we shall hope to see him at the County Ground for many seasons to come.

HAVE YOU SIGNED ON YET

FOR
YOUR

SWINDON ECHO

4d.
WEEKLY

IF NOT THEN DO SO AT YOUR LOCAL NEWSAGENT
AND JOIN OUR GROWING TEAM OF READERS

For your pleasure try

RIVERSIDE LECHLADE LTD.

Tea Room and Gardens - Boating

4 Berth and 2 Berth Cabin Cruisers for hire, also Motor Boats,
Camping Punts, Rowing Boats, Canoes, etc. Parties catered for.

PRIVATE CAR PARK

Telephone: Lechlade 229

Little & Co. Ltd.

Try us for
Clothes for all
the family on
all occasions

31-32 FLEET STREET
SWINDON

Tel. 22831

THE POPULAR MEN'S & LADIES'
COMPLETE OUTFITTERS

We have a
reputation for
Value & Service
that is second
to none

SEE THE LOVELY SELECTION OF
CHOCOLATES AND SWEETS
Greetings Cards a Speciality

CECIL GREEN

CONFECTIONER AND TOBACCONIST

13 VICTORIA ROAD

Telephone 4416

SUPPORTERS' CLUB NOTES - continued

We feel sure that he would very much enjoy watching Second Division games!

The prospects of Second Division Football for Swindon figured prominently in the speeches at our recent Dinner. Mr. Head gave a timely reminder that, although not so much in the limelight as their seniors, the Reserve and Junior teams are enjoying very successful seasons in their respective spheres.

This is very gratifying, both for the present, and as an augury for the future.

The Dinner and Dance which followed, together with an unexpected entertainment by the players, all provided a most enjoyable occasion — one of our most successful social events for a number of seasons — and our thanks are due to Mr. and Mrs. W. Ranger, our Social Secretaries, who made the arrangements, and to all who contributed to our enjoyment.

We were privileged to have with us not only His Worship the Mayor of Swindon and the Mayoress, but also their deputies.

Nearly all of the Directors, Officials and Players of Swindon Town F.C. (with some former players) found it possible to attend, and we were very pleased to meet their wives and friends also.

Today we hope to renew acquaintance with some of our friends amongst the Officials, Committee and Members of the Bristol City Supporters' Club.

The matches, season by season, are always keen, but we have many long established friendships with our opposite numbers, which are not affected in any way by results.

F. J. ROPER
DEVIZES RD.
SWINDON

Phone 22341

FERNDALE
FISHERIES
FERNDALE RD.
SWINDON

Phone 3614

SWINDON'S FINEST

FISH and CHIPS

**CALL ON
YOUR
WAY
HOME**

F. J. ROPER
CLIFTONIAN
38 WILLIAM ST.
SWINDON
Phone 3785

**WE SHALL BE
WAITING
TO
SERVE YOU**

Menu

**Plaice
Hake
Cod
Skate**

F. J. ROPER
HIGH ST.
WOOTTON
BASSETT

F. J. ROPER
CROSS HAYES
MALMESBURY

SWINDON TOWN F.C. SUPPORTERS' CLUB WEEKLY COMPETITION

WINNING NUMBERS

Week 26—Monday, 18th February to Saturday, 23rd February, 1963

Day	Prize	Winning No.
Monday	£20	6095
	£5	12159
Tuesday	£20	10777
	£5	2016
Wednesday	£50	15719
	£10	6414
Thursday	£20	14425
	£5	1
Friday	£20	15622
	£5	383
Saturday	£100	12682
	£20	4029

SWINDON TOWN F.C. DEVELOPMENT FUND COMPETITION

WINNING NUMBERS

Day	Prize	Winning No.
Saturday	£100	6661
	£25	1147
Monday	£20	8323
Tuesday	£20	1339
Wednesday	£20	5683
Thursday	£20	2264
Friday	£20	8821

This space is reserved for

EDWIN H. BRADLEY & SONS LTD.

Builders - Swindon

Eric

(E. Ayliffe)

GENTLEMEN'S HAIRDRESSER

57/59 Faringdon Road, Swindon.

Phone 4569

APPOINTMENTS MAY BE BOOKED IN PRIVATE SALON

ALSTON & YOUNG LTD.

121-123 CRICKLADE ROAD, SWINDON.

Tel. 6671

Scooter and Three-Wheeler Specialists

Main Agents - LAMBRETTA - VESPA - TROJAN

First class after sales service

Open daily 9.0 a.m. to 7.30 p.m.

SUPPORT YOUR HOME

CIVIL DEFENCE

Plays a vital part in saving lives
in PEACE or WAR

Particulars:

CIVIC OFFICES, SWINDON

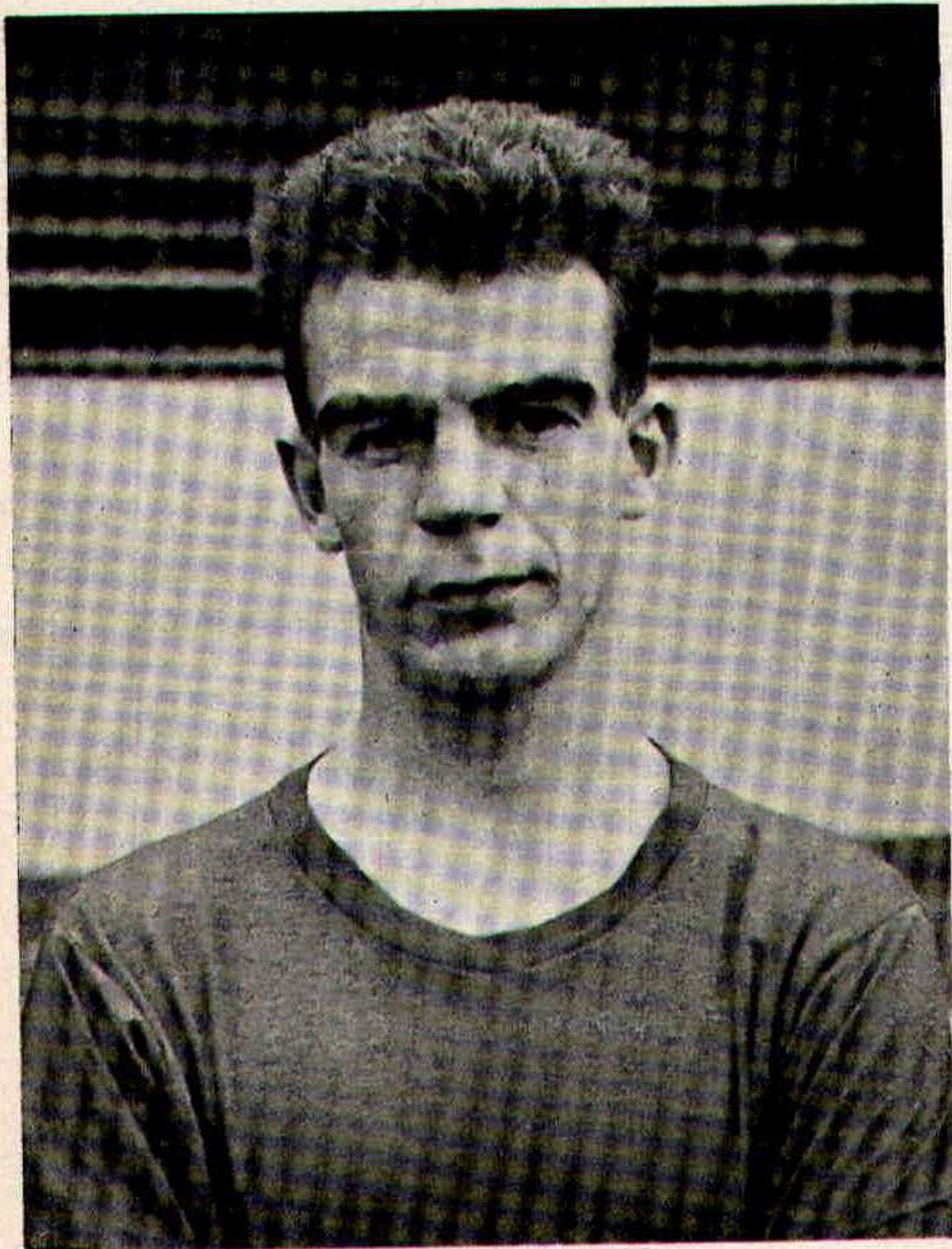
WISES CATERING SERVICE

(Reg. Wise)

Our Caterer for the past 14 seasons
Guarantees

A GOOD CUP OF TEA AT THE
COUNTY GROUND

A full range of Sweets & Cigarettes
at any of our five kiosks on your
way in. ENJOY YOURSELF!



ARNOLD DARCY

BRETTS PET AND GARDEN SUPPLIES

32-33 COMMERCIAL ROAD

and

6 CROMWELL STREET - SWINDON

When thinking of your new
T.V. - Radio - Washing Machine - Refrigerator
make your **GOAL**

HOLMES & LUCAS

14 REGENT STREET - SWINDON

Stockists of all leading makes

Telephone 22526-4721

FOR ALL YOUR ANGLING NEEDS
CONSULT

FRANK WOODWARD

Swindon's Fishing Tackle Specialist

25 HAVELOCK ST., SWINDON
PHONE 3879

For Paints of Good Quality

H. S. HODGES & SONS (SWINDON) LTD.

CRICKLADE RD. - SWINDON
PHONE 22422

Dulux, Brolac, Friary, Valspar,
Wallcharm, etc.

SOUTHERN LAUNDRY

Co. Ltd.

Launderers and Dry Cleaners

STATION ROAD - SWINDON
TELEPHONE 4161

COMLEY'S

Modern Music Centre

26 HAVELOCK ST., SWINDON
RECORDS - MUSIC - INSTRUMENTS

Top Twenty 'Pops' always in stock
and wide selection of Jazz & Classics

Personal Supervision Phone 3874

FOOTBALL COMBINATION

Fixtures and Results to date

Date	Opponents	Ground	Result
August 18	SOUTHEND	(H)	3-1
21	MILLWALL	(A)	1-2
25	BOURNEMOUTH and B.A.	(A)	3-1
September 1	CHELSEA	(H)	0-2
3	WATFORD	(A)	2-2
18	QUEEN'S PARK RANGERS	(H)	3-2
26	SOUTHAMPTON	(A)	3-3
October 23	COVENTRY CITY	(H)	2-0
27	ALDERSHOT	(H)	0-0
November 7	LEYTON ORIENT	(A)	3-6
10	BRIGHTON	(H)	1-0
27	BRENTFORD	(H)	2-2
December 8	CHARLTON	(A)	2-2
11	FULHAM	(H)	6-1
19	PORTSMOUTH	(A)	3-1
22	BIRMINGHAM	(A)	0-3
1963			
January 1	READING	(H)	P
9	READING	(A)	P
15	BOURNEMOUTH and B.A.	(H)	3-1
19	SOUTHEND	(A)	P
29	WATFORD	(H)	P
February 4	QUEEN'S PARK RANGERS	(A)	P
6	CHELSEA	(A)	0-3
9	BIRMINGHAM	(H)	4-2
12	MILLWALL	(H)	3-3
26	SOUTHAMPTON	(H)	
March 6	COVENTRY CITY	(A)	
9	ALDERSHOT	(A)	
11	SOUTHEND UNITED	(A)	
19	LEYTON ORIENT	(H)	
23	BRIGHTON	(A)	
April 9	BRENTFORD	(A)	
16	CHARLTON	(H)	
22	FULHAM	(A)	
30	PORTSMOUTH	(H)	

WILTSHIRE PREMIER LEAGUE

Fixtures and Results to date

Date	Opponents	Ground	Result
August 18	RADSTOCK	(H)	1-1
22	PINEHURST	(A)	1-4
25	STONEHOUSE	(A)	3-0
29	PINEHURST	(H)	1-0
September 1	PURTON	(H)	3-1
8	CALNE	(A)	2-0
15	DEVIZES	(H)	6-1
19	FROME	(A)	1-3
22	TROWBRIDGE	(H)	2-0
29	FROME	(H)	3-0
October 6	WARMINSTER	(H)	3-1
13	PEASEDOWN	(A)	2-1
20	CLANDOWN	(H)	6-0
27	PAULTON	(A)	1-1
November 3	WESTBURY	(H)	5-4
10	MELKSHAM	(A)	0-3
24	CHIPPENHAM	(H)	6-1
December 1	WOOTTON BASSETT	(A)	4-1
8	PAULTON R.	(H)	5-2
15	STONEHOUSE	(H)	4-0
22	PURTON	(A)	5-0
29	CALNE	(H)	P

1963

January 5	DEVIZES	(A)	P
19	WARMINSTER	(A)	P
26	PEASEDOWN	(H)	20-1
February 2	CLANDOWN	(A)	
9			
16	WESTBURY	(A)	
23	MELKSHAM	(H)	
March 2	CHIPPENHAM TOWN	(A)	
9	WOOTTON BASSETT	(H)	
16	SWINDON B.R.	(A)	
23	RADSTOCK	(A)	
April 12	TROWBRIDGE	(A)	

FORTHCOMING MATCHES

SATURDAY, MARCH 16th

DIVISION III

SWINDON TOWN

v.

PORT VALE

Kick-off 3 p.m.

TUESDAY, MARCH 19th

FOOTBALL COMBINATION

SWINDON TOWN

v.

LEYTON ORIENT

Kick-off 7.30 p.m.

SATURDAY, MARCH 30th

DIVISION III

SWINDON TOWN

v.

MILLWALL

Kick-off 3 p.m.

G. A. STREETLY

Tobacconist and Confectioner

10 BOURNE ROAD - MOREDON - SWINDON

Telephone: 4956

ADVERTISING SPACE

IN THIS PROGRAMME

TO LET

Apply:-

SECRETARY,

SWINDON TOWN F.C.,

COUNTY GROUND, SWINDON

Have you purchased your ticket for the

**DEVELOPMENT
FUND
COMPETITION?**

TICKETS 1/- each

Draw at half-time today for

£100 & £25

other Prizes Monday to Friday

£20 EACH DAY

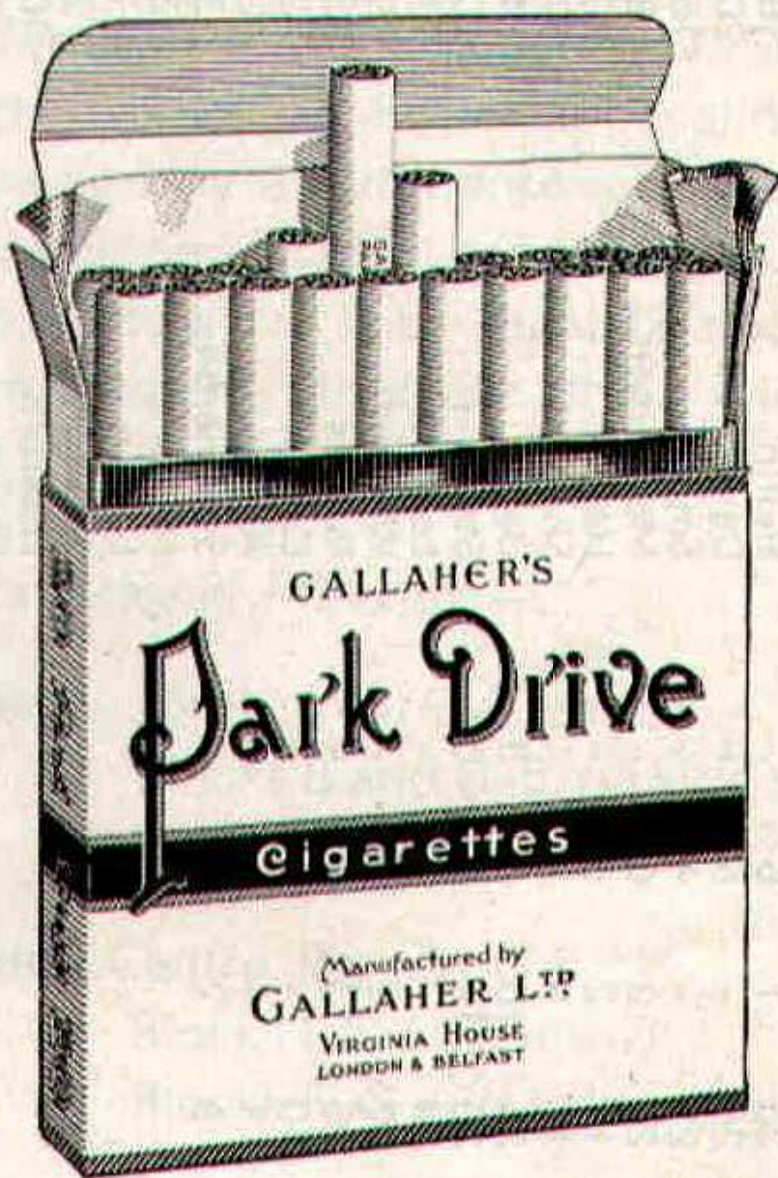
Results published daily in -

"Daily Sketch"

"Evening Advertiser" and

"Bristol Evening Post"

PARK DRIVE



for pleasure

PLAIN 20 for 3/5 TIPPED 20 for 2/10

PLAYERS APPEARANCES AND GOAL SCORERS

Div. III FA & Lge Cups

App. Goals App. Goals

Turner	21	-	6	-	-
O'Hara	5	-	-	-	-
Wollen	21	-	4	-	-
Trollope	26	1	6	-	-
Morgan	26	-	6	-	-
Owen	21	-	4	-	-
Woodruff	26	2	6	-	-
Summerbee	17	2	6	-	-
Darcy	18	5	3	-	3
Hunt	25	10	6	-	6
Smith	26	14	6	-	-
Atkins	4	-	-	-	-
Smart	7	2	-	-	-
Jackson	25	13	6	-	4
McPherson	10	-	4	-	-
Stevens	1	-	-	-	-
Rogers	6	2	3	-	-

Football Combination

Appearances

Goals

O'Hara	12	-	-	-	-
Hicks	4	-	-	-	-
Turner	5	-	-	-	-
Hellin	18	-	-	-	-
Dawson	20	-	-	-	-
Smart	16	4	-	-	-
McPherson	8	-	-	-	-
Harber	20	-	-	-	-
Shergold	17	-	-	-	-
Darcy	4	-	-	-	1
Stevens	20	17	4	-	-
Leggett	17	4	-	-	-
Weaver	9	3	-	-	-
Rogers	13	2	-	-	-
Colsell	2	-	-	-	-
Atkins	12	6	-	-	-
Summerbee	3	2	-	-	-
Mellor	3	-	-	-	-
Leyton	1	-	-	-	-
Jackson	2	-	-	-	-
Huxford	10	-	-	-	-
Owen	1	-	-	-	-
Peapell	2	-	-	-	-
Trollope	1	-	-	-	-
Morgan	1	-	-	-	-
Woodruff	1	-	-	-	-
Hunt	1	-	-	-	1
Chamberlain	7	-	-	-	2

STAND TICKETS

Tickets for seats in the Old and New Stands may be booked in advance. Postal applications should be accompanied by a remittance and stamped addressed envelope. Tickets ordered by telephone must be collected not later than 12 noon on the day of the match, otherwise they will not be reserved.

Prices for League Matches:-

New Stand: Block C-6/6 (Centre)

Blocks B and D-5/6 (Side Stands)

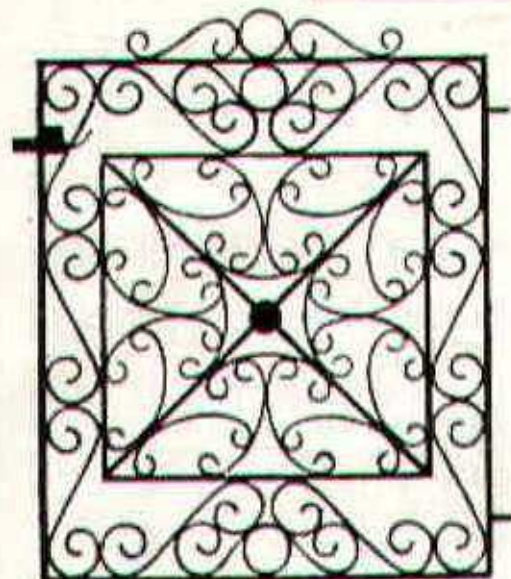
Blocks A and E-4/6 (Wing Stands)

Old Stand: Centre Box-8/-

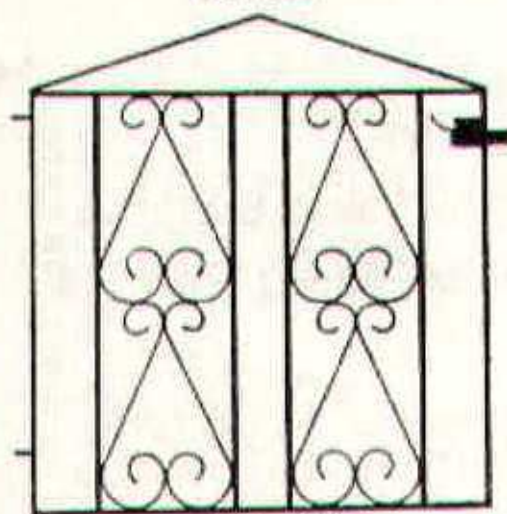
Block H-5/6 (Centre)

Blocks F, G and I-4/- (Side Stands)

Postal applications to: Secretary, Swindon Town F.C., County Ground, Swindon, Wilts. Telephone Swindon 22118.



T.G. 621



T.G. 626

Gates from 58/-
Singles and Doubles

If you live in the Swindon
area we will measure your
Gateway for you.

Our Decorative Ironwork
also includes:

FIRESCREENS
COFFEE TABLES
LAMPS
BRACKETS
CORNER TABLES
BALUSTRADES

SEND FOR FREE CATALOGUE
MARTYN LYNSHAW LIMITED

20 Boundary Works, Stratton Road,
SWINDON. TEL. 4177